



The Global Language of Business

# Warehouse Inbound Instruction and Notification Business Message Standard (BMS)

*Release 3.4.1, Draft, Nov 2019*



## Document Summary

Document Item	Current Value
Document Name	Warehouse Inbound Instruction and Notification Business Message Standard (BMS)
Document Date	Nov 2019
Document Version	3.4.1
Document Issue	1
Document Status	Draft

## Work Request Reference

Date of WR Submission to GSMP:	WR Submitter(s):	Refer to Work Request (WR) Number(s):
25-Jun-2014	GS1 Global Office	14-000110
03-Oct-2018	GS1 GO	18-000319

## Business Requirements Document (BRAD) Reference

BRAD Title	BRAD Issue Date	BRAD Version
Warehousing Inbound and Outbound processes	25-Jul-2012	1.0

## Document Change History

Date of Change	Version	Changed By	Reason for Change	Summary of Change
12-Jan-2012	BMS 3.0 – Issue 1	Mark Van Eeghem	BMS Release 3.0	See summary of changes
01-May-2013	BMS 3.1 – Issue 1	Coen Janssen	BMS Release 3.1	See summary of changes
15-Sep-2014	BMS 3.2 – Issue 1	Ewa Iwicka	BMS Release 3.2	See summary of changes
01-Mar-2017	BMS 3.3 – Issue 1	Ewa Iwicka	BMS Release 3.3	See summary of changes
15-Oct-2018	BMS 3.4 – Draft for community review	Ewa Iwicka	BMS Release 3.4	See summary of changes
08-Nov-2019	BMS 3.4.1 – Issue 1	Radhika Chauhan	BMS Release 3.4.1	See summary of changes

## Disclaimer

GS1®, under its IP Policy, seeks to avoid uncertainty regarding intellectual property claims by requiring the participants in the Work Group that developed this **Warehouse Inbound Instruction and Notification Business Message Standard (BMS)** to agree to grant to GS1 members a royalty-free licence or a RAND licence to Necessary Claims, as that term is



defined in the GS1 IP Policy. Furthermore, attention is drawn to the possibility that an implementation of one or more features of this Specification may be the subject of a patent or other intellectual property right that does not involve a Necessary Claim. Any such patent or other intellectual property right is not subject to the licencing obligations of GS1. Moreover, the agreement to grant licences provided under the GS1 IP Policy does not include IP rights and any claims of third parties who were not participants in the Work Group.

Accordingly, GS1 recommends that any organization developing an implementation designed to be in conformance with this Specification should determine whether there are any patents that may encompass a specific implementation that the organisation is developing in compliance with the Specification and whether a licence under a patent or other intellectual property right is needed. Such a determination of a need for licencing should be made in view of the details of the specific system designed by the organisation in consultation with their own patent counsel.

THIS DOCUMENT IS PROVIDED "AS IS" WITH NO WARRANTIES WHATSOEVER, INCLUDING ANY WARRANTY OF MERCHANTABILITY, NONINFRINGEMENT, FITNESS FOR PARTICULAR PURPOSE, OR ANY WARRANTY OTHERWISE ARISING OUT OF THIS SPECIFICATION. GS1 disclaims all liability for any damages arising from use or misuse of this Standard, whether special, indirect, consequential, or compensatory damages, and including liability for infringement of any intellectual property rights, relating to use of information in or reliance upon this document.

GS1 retains the right to make changes to this document at any time, without notice. GS1 makes no warranty for the use of this document and assumes no responsibility for any errors which may appear in the document, nor does it make a commitment to update the information contained herein.

GS1 and the GS1 logo are registered trademarks of GS1 AISBL.

# Table of Contents

<b>1</b>	<b>Business Domain View</b> .....	<b>5</b>
1.1	Introduction .....	5
1.2	References .....	5
<b>2</b>	<b>Business Context</b> .....	<b>5</b>
<b>3</b>	<b>Business Transaction View</b> .....	<b>6</b>
3.1	Business Transaction – Issue Inbound Instruction .....	6
3.2	Business Transaction – Issue Inbound Notification.....	7
<b>4</b>	<b>Business Information View</b> .....	<b>9</b>
4.1	Warehousing Inbound Instruction.....	9
4.2	Warehousing Inbound Instruction - Shipment .....	11
4.3	Warehousing Inbound Instruction – Shipment Item .....	13
4.4	Warehousing Inbound Notification .....	15
4.5	Warehousing Inbound Notification - Shipment .....	17
4.6	Warehousing Inbound Notification – Shipment Item .....	19
4.7	Warehousing Inbound Notification – Data types .....	20
4.8	Enumerations (message specific) .....	22
4.9	Code Lists .....	22
<b>5</b>	<b>Business Message Examples</b> .....	<b>23</b>
5.1	Example 1 .....	23
5.2	Example 2.....	24
<b>6</b>	<b>Implementation Considerations</b> .....	<b>26</b>
6.1	User Guide .....	26
6.2	Message Specific Considerations .....	26
<b>7</b>	<b>Summary of Changes</b> .....	<b>27</b>
7.1	BMS Release 3.1 .....	27
7.2	BMS Release 3.2 .....	27
7.3	BMS Release 3.3 .....	28
7.4	BMS Release 3.4 .....	29
7.5	BMS Release 3.4.1 .....	29
<b>8</b>	<b>Appendices</b> .....	<b>29</b>
<b>9</b>	<b>Acknowledgements</b> .....	<b>29</b>
9.1.1	Work Group .....	29
9.1.2	Development Team Members .....	31

# 1 Business Domain View

## 1.1 Introduction

### Message Definition

#### Warehousing Inbound Instruction Message Definition

The Warehousing Inbound Instruction message enables a Logistic Services Client (LSC) to inform his Logistic Services Provider (LSP) that goods will be arriving.

#### Warehousing Inbound Notification Message Definition

The Warehousing Inbound Notification message enables a Logistic Services Provider (LSP) to inform his Logistic Services Client (LSC) on the status of goods received on behalf of the client.

### Principles

These messages support the warehouse inbound process.

## 1.2 References

[LIM] GS1 Logistics Interoperability Model, 1.0, GS1 2007

[BRAD\_WIO] BRAD Warehousing Inbound and Outbound Processes, 1.0, GS1 2012

[BMS\_Shared] BMS Shared Common Library, 3.4, GS1 2016

[BMS\_eCom] BMS eCom Common Library, 3.4, GS1 2016

[BMS\_Warehousing] BMS Warehousing Common Library, 3.4, GS1 2016

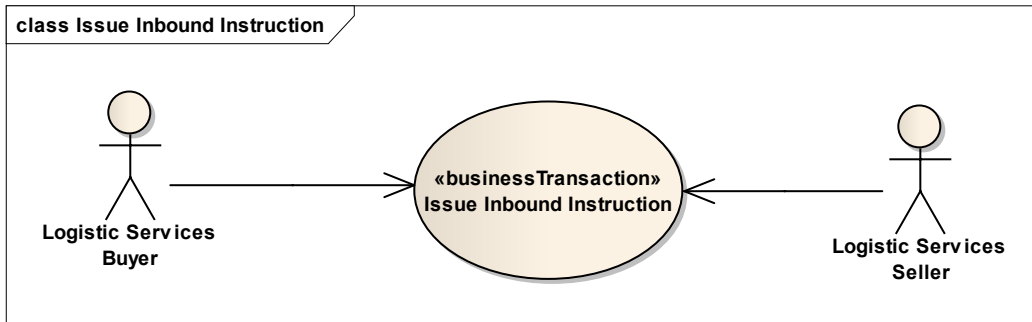
# 2 Business Context

Context Category	Value(s)
Industry	All
Geopolitical	All
Product	All
Process	Warehousing – Inbound Operations
System Capabilities	GS1 System
Official Constraints	None

### 3 Business Transaction View

#### 3.1 Business Transaction – Issue Inbound Instruction

##### Use case diagram



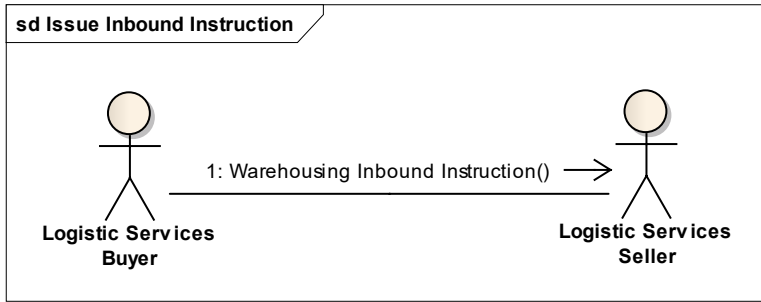
##### Use case description

<b>Use Case Name</b>	Issue Warehousing Inbound Instruction
<b>Use Case Description</b>	The Logistic Services Buyer (LSB) informs the Logistic Services Seller (LSS) that a shipment will be delivered to the warehouse.
<b>Actors (Goal)</b>	Logistic Services Buyer (LSB) Logistic Services Seller (LSS)
<b>Performance Goals</b>	Not applicable
<b>Preconditions</b>	Item master data of the goods to be received have been communicated to the Logistic Services Seller.
<b>Post conditions</b>	The Logistic Services Seller has been informed on the goods to be received.
<b>Main Scenario</b>	<ul style="list-style-type: none"> <li>▪ LSB generates the Warehousing Inbound Instruction from his (enterprise resource planning) system.</li> <li>▪ LSB sends the Warehousing Inbound Instruction to the LSS.</li> <li>▪ LSS receives the Warehousing Inbound Instruction.</li> <li>▪ LSS processes the Warehousing Inbound Instruction in his (warehouse management) system.</li> </ul>
<b>Alternative Scenario(s)</b>	Not applicable
<b>Related Requirements</b>	
<b>Related Rules</b>	

##### Activity diagram

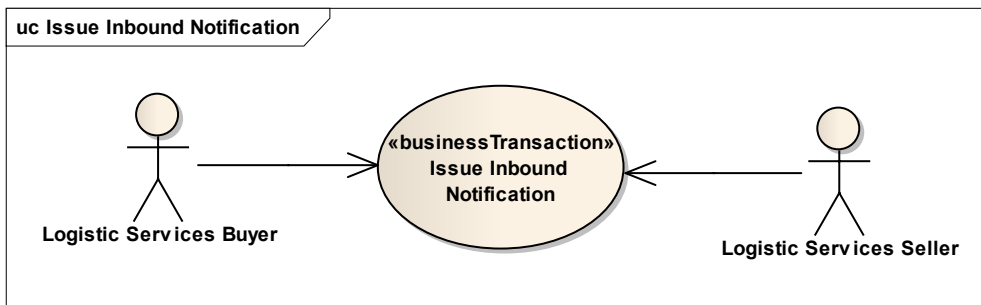
Not applicable

**Communication diagram**



**3.2 Business Transaction – Issue Inbound Notification**

**Use case diagram**



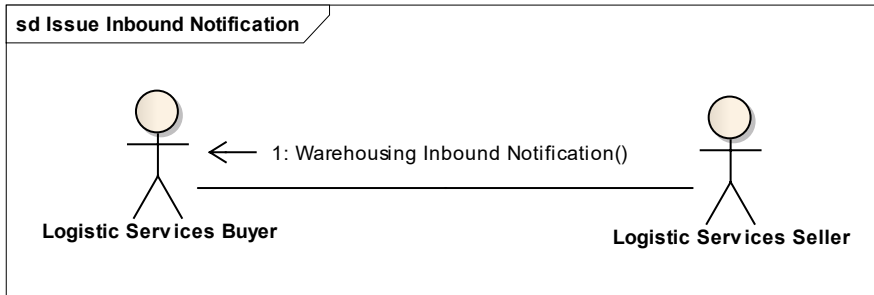
**Use case description**

<b>Use Case Name</b>	Issue Warehousing Inbound Notification
<b>Use Case Description</b>	The Logistic Services Seller (LSS) informs the Logistic Services Buyer (LSB) on the status of a shipment that will be / has been received in the warehouse.
<b>Actors (Goal)</b>	Logistic Services Buyer (LSB) Logistic Services Seller (LSS)
<b>Performance Goals</b>	Not applicable
<b>Preconditions</b>	<ul style="list-style-type: none"> <li>▪ Item master data of the goods to be received have been communicated to the Logistic Services Seller.</li> <li>▪ The Logistic Services Seller has been informed on the goods to be received. Exception to this condition is the situation where 'spontaneous receipts are allowed.</li> </ul>
<b>Post conditions</b>	The Logistic Services Buyer has been informed on status of the inbound shipment.
<b>Main Scenario</b>	<ul style="list-style-type: none"> <li>▪ LSS generates the Warehousing Inbound Notification from his (warehouse management) system.</li> <li>▪ LSS sends the Warehousing Inbound Notification to the LSB.</li> <li>▪ LSB receives the Warehousing Inbound Notification.</li> <li>▪ LSB processes the Warehousing Inbound Notification in his (enterprise resource planning) system.</li> </ul>
<b>Alternative Scenario(s)</b>	Not applicable
<b>Related Requirements</b>	
<b>Related Rules</b>	

**Activity diagram**

Not applicable

**Communication diagram**

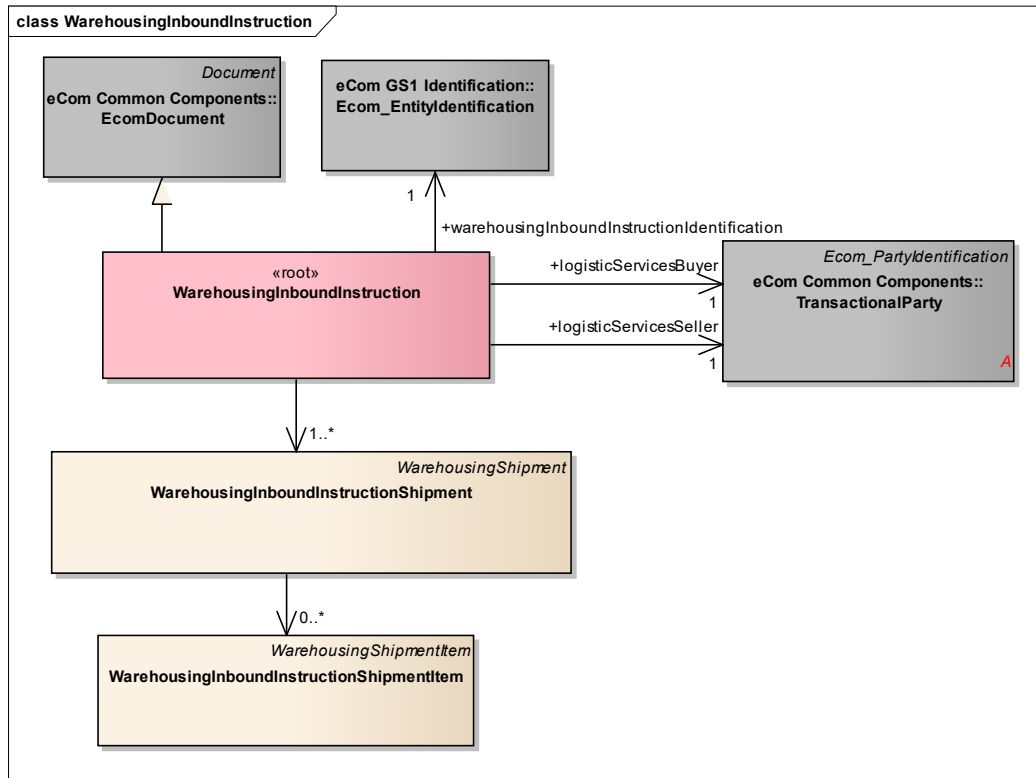




## 4 Business Information View

### 4.1 Warehousing Inbound Instruction

#### Class diagram



**GDD report**

The content of the WarehousingInboundInstruction class, its structure and component definitions can be accessed in the Global Data Dictionary: [http://apps.gs1.org/GDD/bms/Version3\\_4/Pages/bieDetails.aspx?semanticURN=urn:gs1:gdd:bie:WarehousingInboundInstruction](http://apps.gs1.org/GDD/bms/Version3_4/Pages/bieDetails.aspx?semanticURN=urn:gs1:gdd:bie:WarehousingInboundInstruction)

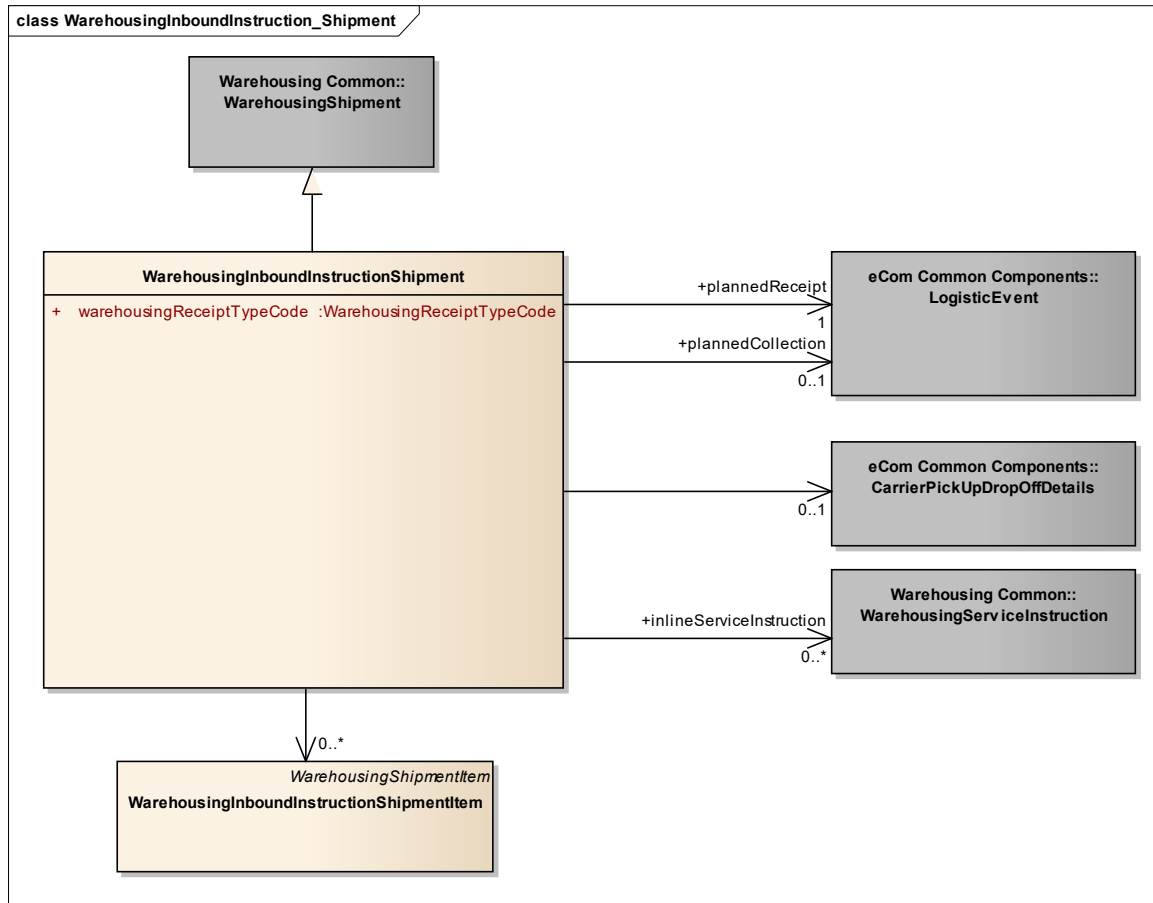
Content	Attribute / Role	Datatype /Secondary class	Multiplicity	Definition	Requirements
WarehousingInboundInstruction				Message that supports the warehouse inbound process, and enables a Logistic Services Client (LSC) to inform his Logistic Services Provider (LSP) that goods will be arriving.	
Association	logisticServicesSeller	TransactionalParty	1..1	A party that provides logistics services to another party.	
Association		WarehousingInboundInstructionShipment	1..*	Information on the shipments that need to be received by the logistics services seller.	
Association	warehousingInboundInstructionIdentification	Ecom_EntityIdentification	1..1	The identification of the warehousing inbound instruction document.	
Generalization		EcomDocument		Basic information about the content of the message including version number, creation date and time.	WR 14-000110
Association	logisticServicesBuyer	TransactionalParty	1..1	A party that purchases logistics services from another party.	



**Note:** Reference Shared Common Library Business Message (BMS) Release 3.4 and eCom Domain Common Library Business Message (BMS) Release 3.4 for all common information.

## 4.2 Warehousing Inbound Instruction - Shipment

### Class Diagram



### GDD Report

The content of the WarehousingInboundInstructionShipment class, its structure and component definitions can be accessed in the Global Data Dictionary:

[http://apps.gs1.org/GDD/bms/Version3\\_4/Pages/bieDetails.aspx?semanticURN=urn:gs1:gdd:bie:WarehousingInboundInstructionShipment](http://apps.gs1.org/GDD/bms/Version3_4/Pages/bieDetails.aspx?semanticURN=urn:gs1:gdd:bie:WarehousingInboundInstructionShipment)

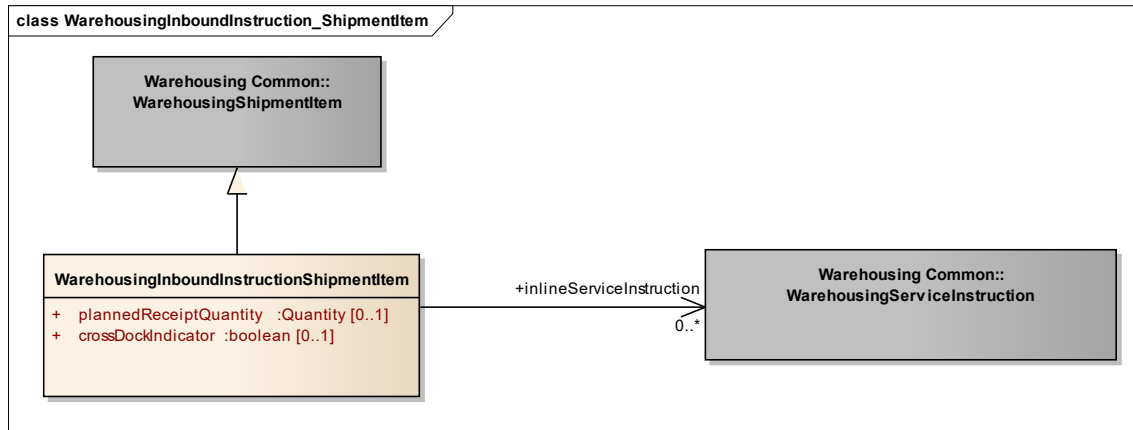
Content	Attribute / Role	Datatype /Secondary class	Multiplicity	Definition	Requirements
<b>WarehousingInboundInstructionShipment</b>				A shipment is an identifiable collection of one or more Trade Items available to be transported together from the shipper (Original Consignor/Shipper), to the receiver (Final/Ultimate Consignee).	
Association		WarehousingInboundInstructionShipmentItem	0..*	Details on the items contained in the shipment.	
Association	inlineServiceInstruction	WarehousingServiceInstruction	0..*	Details on one or more services to be performed by the logistic services seller during inbound processing.	[brad-whiop:insrec_4.5]
Association		CarrierPickUpDropOffDetails	0..1	Details on the carrier that will deliver the goods.	[brad-wio:insrec_4.4]
Association	plannedCollection	LogisticEvent	0..1	The date and time goods need to be collected from a rail terminal, sea port, airport or inland container terminal.This element is not intended to be used for the pick-up at supplier scenario.	[brad-whiop:insrec_4.2]
Association	plannedReceipt	LogisticEvent	1..1	Date and time the goods are planned to be delivered.	[brad-whiop:insrec_4.1]
Generalization		WarehousingShipment			
Attribute	warehousingReceiptTypeCode	WarehousingReceiptTypeCode	1..1	Code specifying the type of receipt, in order to inform the receiving party how to process the receipt.	[brad-whiop:insrec-4.3]



**Note:** Reference Shared Common Library Business Message (BMS) Release 3.4 and eCom Domain Common Library Business Message (BMS) Release 3.4 for all common information.

## 4.3 Warehousing Inbound Instruction – Shipment Item

### Class Diagram



### GDD Report

The content of the **WarehousingInboundInstructionShipmentItem** class, its structure and component definitions can be accessed in the Global Data Dictionary:

[http://apps.gs1.org/GDD/bms/Version3\\_4/Pages/bieDetails.aspx?semanticURN=urn:gs1:gdd:bie:WarehousingInboundInstructionShipmentItem](http://apps.gs1.org/GDD/bms/Version3_4/Pages/bieDetails.aspx?semanticURN=urn:gs1:gdd:bie:WarehousingInboundInstructionShipmentItem)

Content	Attribute / Role	Datatype / Secondary class	Multiplicity	Definition	Requirements
WarehousingInboundInstructionShipmentItem				A shipment item is collection of trade items and related logistic units that can each be identified (uniquely) within a shipment.	
Generalization		WarehousingShipmentItem			
Association	inlineServiceInstruction	WarehousingServiceInstruction	0..*	Details on one or more services to be performed by the logistic services seller during inbound processing.	[brad-whiop:insrec_5.2]
Attribute	plannedReceiptQuantity	Quantity	0..1	The quantity that is ordered / planned to be received.	[brad-whiop:insrec_5.1]



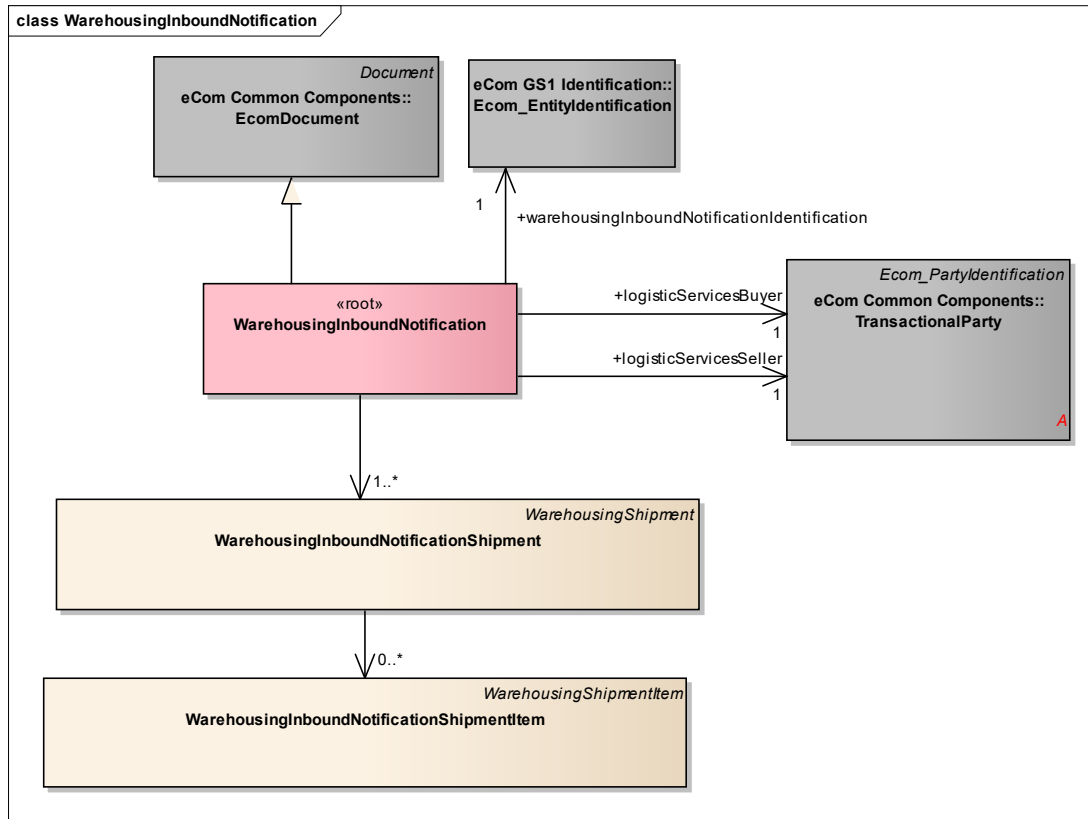
Content	Attribute / Role	Datatype /Secondary class	Multiplicity	Definition	Requirements
Attribute	crossDockIndicator	boolean	0..1	Indication whether or not the received shipment item needs to be cross-docked instead of put into storage.	



**Note:** Reference Shared Common Library Business Message (BMS) Release 3.4 and eCom Domain Common Library Business Message (BMS) Release 3.4 for all common information.

## 4.4 Warehousing Inbound Notification

### Class diagram



### GDD Report

The content of the WarehousingInboundNotification class, its structure and component definitions can be accessed in the Global Data Dictionary: [http://apps.gs1.org/GDD/bms/Version3\\_4/Pages/bieDetails.aspx?semanticURN=urn:gs1:gdd:bie:WarehousingInboundNotification](http://apps.gs1.org/GDD/bms/Version3_4/Pages/bieDetails.aspx?semanticURN=urn:gs1:gdd:bie:WarehousingInboundNotification)

Content	Attribute / Role	Datatype /Secondary class	Multiplicity	Definition	Requirements
WarehousingInboundNotification				Message that supports the warehouse inbound process, and enables a Logistic Services Provider (LSP) to inform his Logistic Services Client (LSC) on the status of goods received on behalf of the client.	
Association	logisticServicesSeller	TransactionalParty	1..1	A party that provides logistics services to another party.	[brad_wio:ibsta-3]
Association	logisticServicesBuyer	TransactionalParty	1..1	A party that purchases logistics services from another party.	[brad_wio:ibsta-2]
Association		WarehousingInboundNotificationShipment	1..*	Status information on the shipments that have been received or are expected to be received.	[brad_wio:ibsta-4.3]
Generalization		EcomDocument		Basic information about the content of the message including version number, creation date and time.	WR 14-000110
Association	warehousingInboundNotificationIdentification	Ecom_EntityIdentification	1..1	The identification of the warehousing inbound notification document.	[brad_wio:ibsta-1] WR 15-000314

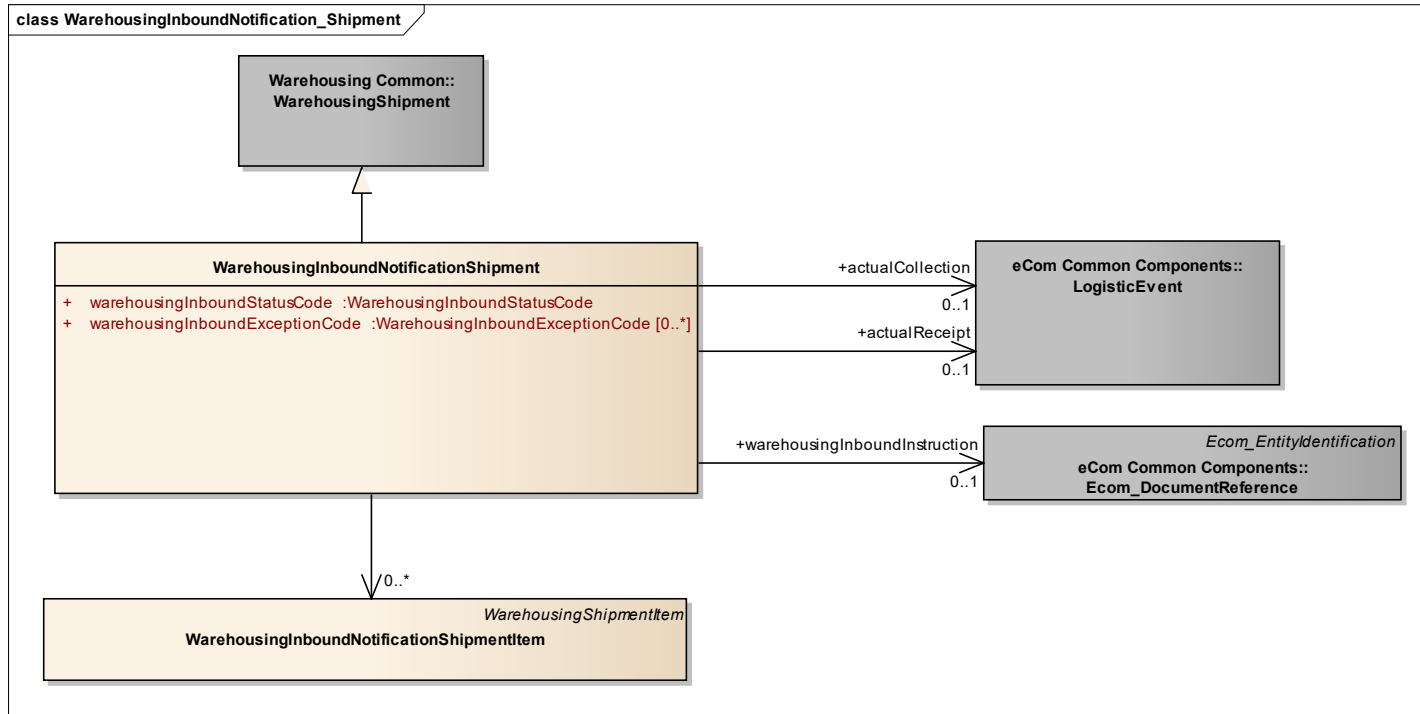


**Note:** Reference Shared Common Library Business Message (BMS) Release 3.4 and eCom Domain Common Library Business Message (BMS) Release 3.4 for all common information.



## 4.5 Warehousing Inbound Notification - Shipment

### Class diagram



**GDD Report**

The content of the WarehousingInboundNotificationShipment class, its structure and component definitions can be accessed in the Global Data Dictionary:

[http://apps.gs1.org/GDD/bms/Version3\\_4/Pages/bieDetails.aspx?semanticURN=urn:gs1:gdd:bie:WarehousingInboundNotificationShipment](http://apps.gs1.org/GDD/bms/Version3_4/Pages/bieDetails.aspx?semanticURN=urn:gs1:gdd:bie:WarehousingInboundNotificationShipment)

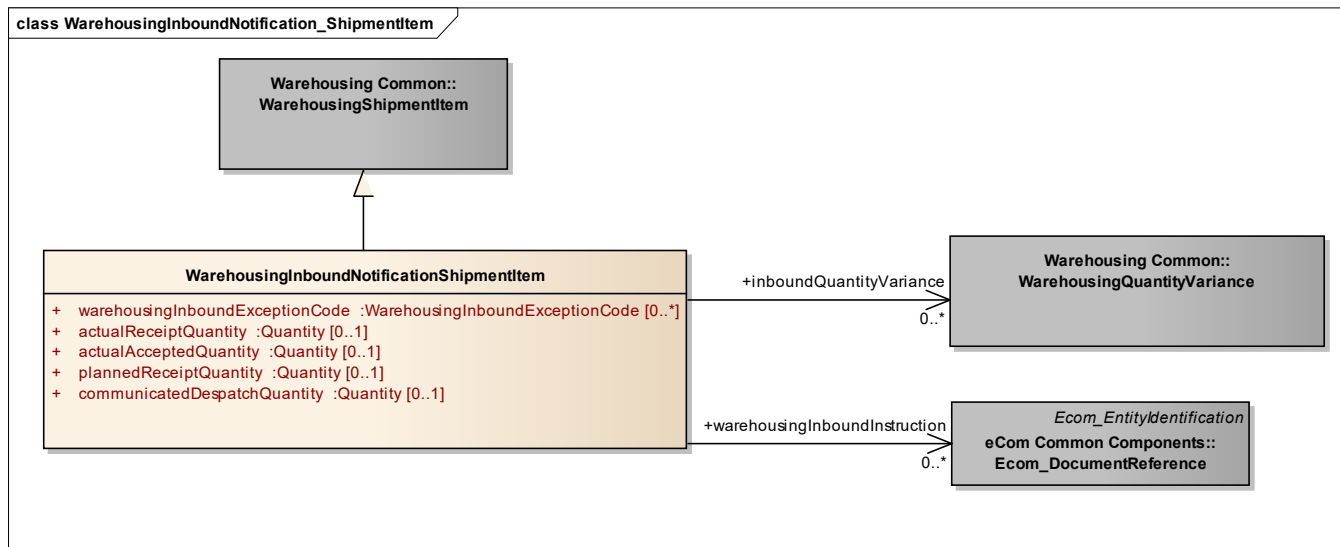
Content	Attribute / Role	Datatype /Secondary class	Multiplicity	Definition	Requirements
<b>WarehousingInboundNotificationShipment</b>					
Association	actualCollection	LogisticEvent	0..1	Details on the date and time the goods were collected from a rail terminal, sea port, airport or inland container terminal.	[brad_wio:ibsta-4.5]
Association		WarehousingInboundNotificationShipmentItem	0..*	Details on the items contained in the shipment.	[brad_wio:ibsta-5]
Association	actualReceipt	LogisticEvent	0..1	Details on the date and time the goods were received in the warehouse.	[brad_wio:ibsta-4.4]
Association	warehousingInboundInstruction	Ecom_DocumentReference	0..1	A reference to the related line item in the inbound instruction.	WR 15-000314
Generalization		WarehousingShipment			
Attribute	warehousingInboundStatusCode	WarehousingInboundStatusCode	1..1	Code specifying the status of the inbound shipment.	[brad_wio:ibsta-4.2]
Attribute	warehousingInboundExceptionCode	WarehousingInboundExceptionCode	0..*	Code specifying an exception that occurred in the inbound shipment.	[brad_wio:ibsta-4.3]



**Note:** Reference Shared Common Library Business Message (BMS) Release 3.4 and eCom Domain Common Library Business Message (BMS) Release 3.4 for all common information.

## 4.6 Warehousing Inbound Notification – Shipment Item

### Class diagram



### GDD Report

The content of the `WarehousingInboundNotificationShipmentItem` class, its structure and component definitions can be accessed in the Global Data Dictionary:

[http://apps.gs1.org/GDD/bms/Version3\\_4/Pages/bieDetails.aspx?semanticURN=urn:gs1:gdd:bie:WarehousingInboundNotificationShipmentItem](http://apps.gs1.org/GDD/bms/Version3_4/Pages/bieDetails.aspx?semanticURN=urn:gs1:gdd:bie:WarehousingInboundNotificationShipmentItem)

Content	Attribute / Role	Datatype /Secondary class	Multiplicity	Definition	Requirements
WarehousingInboundNotificationShipmentItem				A shipment item is collection of trade items and related logistic units that can each be identified (uniquely) within a shipment.	
Association	inboundQuantityVariance	WarehousingQuantityVariance	0..*	Quantity and reason of a shortage or surplus occurring in a warehousing process.	[brad_wio:ibsta-5.7]

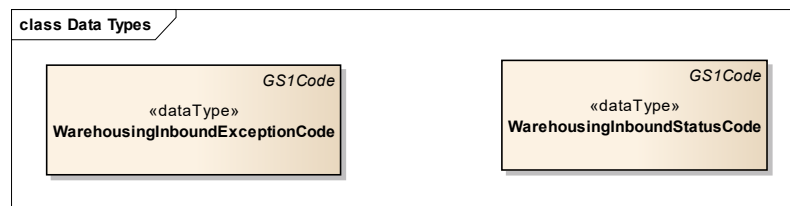
Content	Attribute / Role	Datatype /Secondary class	Multiplicity	Definition	Requirements
Association	warehousingInboundInstruction	Ecom_DocumentReference	0..1	A reference to the related line item in the inbound instruction.	WR 15-000314
Generalization		WarehousingShipmentItem			
Attribute	warehousingInboundExceptionCode	WarehousingInboundExceptionCode	0..*	Code specifying an exception that occurred in the inbound shipment.	[brad_wio:ibsta-5.2]
Attribute	actualReceiptQuantity	Quantity	0..1	The number of items that were received.	[brad_wio:ibsta-5.3]
Attribute	actualAcceptedQuantity	Quantity	0..1	The number of items that were accepted.	[brad_wio:ibsta-5.4]
Attribute	plannedReceiptQuantity	Quantity	0..1	The number of items that were planned to be received, as stated in the inbound instruction.	[brad_wio:ibsta-5.5]
Attribute	communicatedDespatchQuantity	Quantity	0..1	The number of items that were despatched, as stated in the despatch advice sent by the shipper.	[brad_wio:ibsta-5.6]



**Note:** Reference Shared Common Library Business Message (BMS) Release 3.4 and eCom Domain Common Library Business Message (BMS) Release 3.4 for all common information.

## 4.7 Warehousing Inbound Notification – Data types

### Class diagram





**GDD Report**

Content	Attribute / Role	Datatype /Secondary class	Multiplicity	Definition	Code List
WarehousingInboundExceptionCode					urn:gs1:gdd:cl:WarehousingInboundExceptionCode
Generalization		GS1Code			
WarehousingInboundStatusCode					urn:gs1:gdd:cl:WarehousingInboundStatusCode
Generalization		GS1Code			



**Note:** Reference Shared Common Library Business Message (BMS) Release 3.4 and eCom Domain Common Library Business Message (BMS) Release 3.4 for all common information.

#### 4.8 Enumerations (message specific)

Not applicable

#### 4.9 Code Lists

Class	Codelist	GDD Link
WarehousingInboundInstructionShipment	WarehousingReceiptTypeCode	<a href="http://apps.gs1.org/GDD/Pages/clDetails.aspx?semanticURN=urn:gs1:gdd:cl:WarehousingReceiptTypeCode">http://apps.gs1.org/GDD/Pages/clDetails.aspx?semanticURN=urn:gs1:gdd:cl:WarehousingReceiptTypeCode</a>
WarehousingInboundNotificationShipment, WarehousingInboundNotificationShipmentItem	WarehousingInboundExceptionCode	<a href="http://apps.gs1.org/GDD/Pages/clDetails.aspx?semanticURN=urn:gs1:gdd:cl:WarehousingInboundExceptionCode">http://apps.gs1.org/GDD/Pages/clDetails.aspx?semanticURN=urn:gs1:gdd:cl:WarehousingInboundExceptionCode</a>
WarehousingInboundNotificationShipment	WarehousingInboundStatusCode	<a href="http://apps.gs1.org/GDD/Pages/clDetails.aspx?semanticURN=urn:gs1:gdd:cl:WarehousingInboundStatusCode">http://apps.gs1.org/GDD/Pages/clDetails.aspx?semanticURN=urn:gs1:gdd:cl:WarehousingInboundStatusCode</a>



**Note:** Refer to the Global Data Dictionary (GDD) for the code values.



## 5 Business Message Examples

### 5.1 Example 1

This is an example of the Warehousing Inbound Instruction message.

#### Party Information

GS1 Global Location Number	Party Type
3333333000001	Logistic Services Seller
2222222000004	Logistic Services Buyer
1111111000007	Shipper
3333333000018	Receiver

#### Message Example 1

Attribute	Value
<b>WarehousingInboundInstruction</b>	
creationDateTime	2012-07-11 12:15
documentStatusCode	ORIGINAL
documentActionCode	ADD
<b>TransactionalParty (+logisticServicesSeller)</b>	
gln	3333333000001
<b>TransactionalParty (+logisticServicesBuyer)</b>	
gln	2222222000004
<b>EntityIdentification (+warehousingInboundInstructionIdentification)</b>	
entityIdentification	INSREC00123
<b>WarehousingInboundInstructionShipment</b>	
warehousingReceiptTypeCode	PRIORITY_RECEIPT
<b>TransactionalParty (+receiver)</b>	
gln	3333333000018
<b>TransactionalParty (+shipper)</b>	
gln	1111111000007
<b>ShipmentIdentification (+)</b>	
gsin	11111110000834053
<b>PackageTotal (+)</b>	
packageTypeCode	AF
totalPackageQuantity	2
<b>LogisticUnit (+)</b>	
packageTypeCode	: AF
<b>LogisticUnitIdentification (+)</b>	
sscc	311111110000123455
<b>LogisticUnit (+)</b>	
packageTypeCode	AF

Attribute	Value
<b>LogisticUnitIdentification (+)</b>	
sscc	311111110000123554
<b>CarrierPickUpDropOffDetails (+)</b>	
<b>TransportMeans (+)</b>	
transportMeansTypeCode	31
transportMeansID	11-BB-AA
Person (+transportResponsiblePerson)	personName: LENMAN
<b>IdentityDocument (+)</b>	
identityDocumentNumber	12345
identityDocumentType	DRIVERS_LICENSE
<b>LogisticEvent (+plannedReceipt)</b>	
<b>DateTimeRange (+logisticEventPeriod)</b>	
beginDate	2012-07-12
beginTime	10:00
endDate	2012-07-12
endTime	11:00
<b>WarehousingInboundInstructionShipmentItem</b>	
lineItemNumber	1
plannedReceiptQuantity	40
<b>TransactionalTradeItem</b>	
gtin	0222222003333
<b>LogisticUnit</b>	
tradeItemQuantity	20
<b>LogisticUnitIdentification (+)</b>	
sscc	311111110000123455
<b>LogisticUnit</b>	
tradeItemQuantity	20
<b>LogisticUnitIdentification (+)</b>	
sscc	311111110000123554

## 5.2 Example 2

### Warehousing Inbound Notification

This is an example of the Warehousing Inbound Notification message. The Manufacturer 2222222 has outsourced a distribution centre to LSP 3333333.

The LSP informs the Manufacturer that the unloading of the shipment from Supplier 1111111 has been completed.

### Party Information

GS1 Global Location Number	Party Type
3333333000001	Logistic Services Seller
2222222000004	Logistic Services Buyer





GS1 Global Location Number	Party Type
1111111000007	Shipper
3333333000018	Receiver

**Message Example 2**

Attribute	Value
<b>WarehousingInboundNotification</b>	
creationDateTime	2012-07-11 12:15
documentStatusCode	ORIGINAL
documentActionCode	ADD
<b>EntityIdentification (+warehousingInboundNotificationIdentification)</b>	
entityIdentification	IBSTA00113
<b>TransactionalParty (+logisticServicesSeller)</b>	
gln	3333333000001
<b>TransactionalParty (+logisticServicesBuyer)</b>	
gln	2222222000004
<b>WarehousingInboundNotificationShipment</b>	
warehousingInboundStatusCode	UNLOADING_FINISHED
<b>TransactionalParty (+receiver)</b>	
gln	3333333000018
<b>TransactionalParty (+shipper)</b>	
gln	1111111000007
<b>ShipmentIdentification (+)</b>	
gsin	11111110000834053
<b>DocumentReference (+warehousingInboundInstruction)</b>	
entityIdentification	INSREC00123
<b>PackageTotal (+)</b>	
packageTypeCode	AF
totalPackageQuantity	2
<b>LogisticUnit (+)</b>	
packageTypeCode	AF
LogisticUnitIdentification (+)	
sscc	311111110000123455
<b>LogisticUnit (+)</b>	
packageTypeCode	AF
LogisticUnitIdentification (+)	
sscc	311111110000123554
<b>LogisticEvent (+actualReceipt)</b>	
<b>DateOptionalTime (+logisticEventDateTime)</b>	
date	2012-07-12
time	11:30



## **6 Implementation Considerations**

### **6.1 User Guide**

The Functional User Guide contains more information about the structure and content of the Warehouse Inbound Instruction and Notification message:

[http://www.gs1.org/docs/ecom/xml/3/3.4/eCom-Trade\\_messages.html#WarehouseInboundInstructionandNotification](http://www.gs1.org/docs/ecom/xml/3/3.4/eCom-Trade_messages.html#WarehouseInboundInstructionandNotification)

### **6.2 Message Specific Considerations**

Not applicable

## 7 Summary of Changes

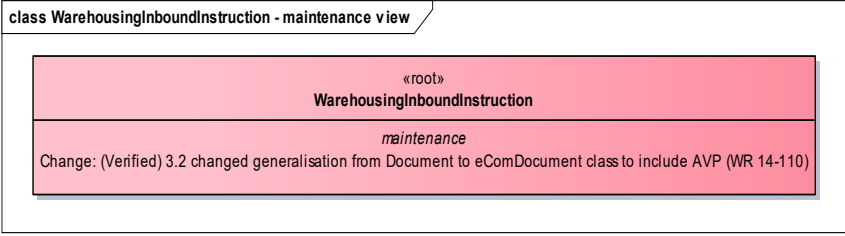
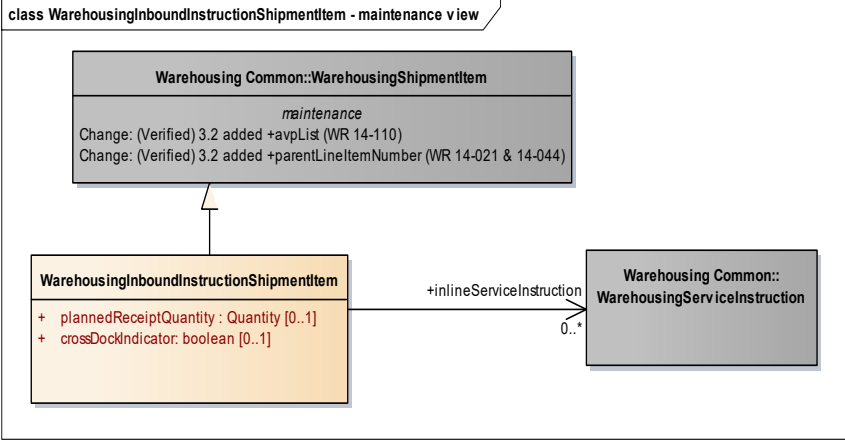
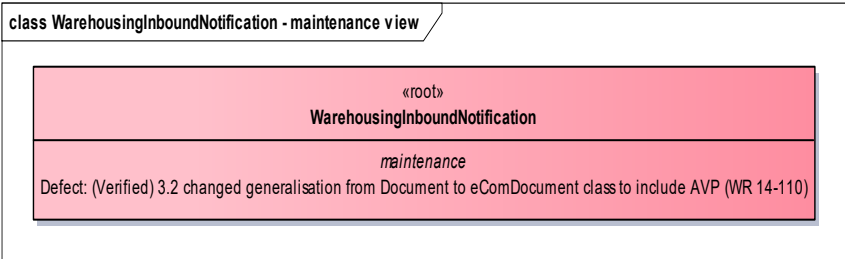
Any change in the GS1 standards is done based on the Work Request (WR) submitted by the GS1 User Companies or Member Organisations. All Work Requests are documented in the Work Request system available on the GS1 website: <http://wr.gs1.org>. The system is accessible to registered users. New visitors need to register first, to be able to access it. WRs can be searched by the number referenced in tables below, see: Search Work Requests. The number starts with the two last digits of the year when it was submitted, followed by the consecutive number within that year.

**Note:** WRs submitted earlier than February 2012 should be searched in Old Change Requests.

### 7.1 BMS Release 3.1

First publication

### 7.2 BMS Release 3.2

Change	Associated WR
<p>Added Attribute Value Pair at the root, line item and sub line item levels</p> 	<p><b>14-000110</b></p>
<p>Added Attribute Value Pair at the root, line item and sub line item levels</p> 	<p><b>14-000110</b></p>
<p>Added Attribute Value Pair at the root, line item and sub line item levels</p> 	<p><b>14-000110</b></p>

Change	Associated WR
<p>Added Attribute Value Pair at the root, line item and sub line item levels</p> <pre> class WarehousingInboundNotificationShipmentItem - maintenance view     class WarehousingCommon::WarehousingShipmentItem         maintenance         Change: (Verified) 3.2 added +sxpList (WR 14-110)         Change: (Verified) 3.2 added +parentLineItemNumber (WR 14-021 &amp; 14-044)     end class     class WarehousingInboundNotificationShipmentItem         + warehousingInboundExceptionCode : WarehousingInboundExceptionCode [0..*]         + actualReceiptQuantity : Quantity [0..1]         + actualAcceptedQuantity : Quantity [0..1]         + plannedReceiptQuantity : Quantity [0..1]         + communicatedDespatchQuantity : Quantity [0..1]     end class     class WarehousingCommon::WarehousingQuantityVariance         maintenance     end class     class SharedCommonComponents::DocumentReference         EntityIdentification         maintenance         Change: (Complete) 3.1 added revisionNumber (WR 12-153)     end class     WarehousingInboundNotificationShipmentItem --&gt; WarehousingCommon::WarehousingQuantityVariance : +inboundQuantityVariance 0..*     WarehousingInboundNotificationShipmentItem --&gt; SharedCommonComponents::DocumentReference : +warehousingInboundInstruction 0..1         </pre>	<p><b>14-000110</b></p>

### 7.3 BMS Release 3.3

Change	Associated WR
<p>Created Ecom_EntityIdentification class and changed association from the previous EntityIdentification</p> <pre> class WarehousingInboundNotification - maintenance view     class eComGS1Identification::Ecom_EntityIdentification         maintenance         Change: (New) 3.3 New class (WR 15-314)     end class     class WarehousingInboundNotification         &lt;&lt;root&gt;&gt;         maintenance         Change: (Complete) 3.2 changed generalisation from Document to eComDocument class to include AVP (WR 14-110)         Change: (New) 3.3 changed association from EntityIdentification to Ecom_EntityIdentification (WR 15-314)     end class     WarehousingInboundNotification --&gt; eComGS1Identification::Ecom_EntityIdentification : +warehousingInboundNotificationIdentification 1         </pre>	<p><b>15-000314</b></p> <p>Make GS1 identification keys optional in GS1 EDI XML</p>
<p>Created Ecom_DocumentReference class and changed association from the previous DocumentReference</p> <pre> class WarehousingInboundNotificationShipmentItem - maintenance view     class WarehousingInboundNotificationShipmentItem         + warehousingInboundExceptionCode : WarehousingInboundExceptionCode [0..*]         + actualReceiptQuantity : Quantity [0..1]         + actualAcceptedQuantity : Quantity [0..1]         + plannedReceiptQuantity : Quantity [0..1]         + communicatedDespatchQuantity : Quantity [0..1]     end class     class eComCommonComponents::Ecom_DocumentReference         Ecom_EntityIdentification         maintenance         Change: (New) 3.3 added +referencedDocumentUnit (WR 16-261)         Change: (New) 3.3 New class (WR 15-314)     end class     WarehousingInboundNotificationShipmentItem --&gt; eComCommonComponents::Ecom_DocumentReference : +warehousingInboundInstruction 0..*         </pre>	<p><b>15-000314</b></p> <p>Make GS1 identification keys optional in GS1 EDI XML</p>

Change	Associated WR
<p>Created Ecom_EntityIdentification class and changed association from the previous EntityIdentification</p> <pre> classDiagram     class WarehouseInboundInstruction {         &lt;&lt;root&gt;&gt;         maintenance     }     class Ecom_EntityIdentification {         maintenance     }     WarehouseInboundInstruction "1" --&gt; "1" Ecom_EntityIdentification : +warehousingInboundInstructionIdentification     </pre> <p>The diagram shows a class <b>WarehouseInboundInstruction</b> (root) with a <i>maintenance</i> section. It has an association with <b>eCom GS1 Identification::Ecom_EntityIdentification</b> (also with a <i>maintenance</i> section). The association is labeled <code>+warehousingInboundInstructionIdentification</code> and has a multiplicity of 1 at both ends.</p> <p>Change: (Complete) 3.2 changed generalisation from Document to eComDocument class to include AVP (WR 14-110)  Change: (New) 3.3 changed association from EntityIdentification to Ecom_EntityIdentification (WR 15-314)</p>	<p><b>15-000314</b>  Make GS1 identification keys optional in GS1 EDI XML</p>

## 7.4 BMS Release 3.4

No work requests. Indirect changes due to upgrade to new Shared and eCom Common libraries.

## 7.5 BMS Release 3.4.1

No work requests. Indirect changes due to upgrade to new Shared and eCom Common libraries.

# 8 Appendices

Not Applicable

# 9 Acknowledgements

## 9.1.1 Work Group

Function	Name	Company / organisation
Co-chair	Rossner (Pottier), Natascha	GS1 France
Co-chair	Schmidt, Tom Eric	August Storck KG
Member	Bemrose, Jonathan	R&R Ice Cream
Member	Bodemer, Petra	dm-drogerie markt GmbH + Co. KG
Member	Boikanyo, Rebone	GS1 South Africa / Consumer Goods Council of South Africa
Member	Canada, ON	M3B 3L1
Member	Carlson, Jim	General Mills, Inc.
Member	Chresta, Richard	GS1 Switzerland
Member	Cook, Don	Wal-Mart Stores, Inc.
Member	Cox, Marc	Philips Electronics N.V.
Member	Darnell, David	Systrends



Function	Name	Company / organisation
Member	De Flou, Nele	GS1 Belgium & Luxembourg
Member	Dicks, Arne	GS1 Germany
Member	Duvinger, Karina	GS1 Sweden
Member	Foerderer, Klaus	GS1 Germany
Member	Gathmann, Stefan	GS1 Ireland
Member	Grangard, Anders	GS1 Global Office
Member	Harpell, Eileen	GS1 Community Room Staff
Member	Hand, Phil	JDA Software
Member	Herregodts, Kurt	GS1 Belgium & Luxembourg
Member	Kempkes, Fred	Unilever N.V.
Member	Kernan, Brendan	GS1 Ireland
Member	Kidd, Robin	Nestle
Member	Krid, Anne-Claire	GS1 France
Member	Lanoue, Tom	General Mills, Inc.
Member	Laur, Rita	GS1 Canada
Member	Lenman, Mia	GS1 Sweden
Member	Lerch, Hanjoerg	METRO Group
Member	Moberg, Dale	Axway
Member	Montes de Oca, Alejandra	GS1 Mexico
Member	Ng, Ella	GS1 Australia
Member	Peelen, Esther	GS1 Netherlands
Member	Pelekies, Andreas	GS1 Germany
Member	Perrier, Patricia	GS1 France
Member	Przybilla, Christian	GS1 Germany
Member	Pujol, Xavier	GS1 Spain
Member	Racek, Greg	Wal-Mart Stores, Inc.
Member	Repetto, Mirko	GS1 Italy
Member	Robba, Steven	1WorldSync Holdings, Inc.
Member	Rosell, Pere	GS1 Spain
Member	Rosenberg, Steven	GS1 US
Member	Schmid, Sue	GS1 Australia
Member	Schneider, Christian	GS1 Switzerland
Member	Sehorz, Eugen	GS1 Austria
Member	Sharma, Vishal	General Mills, Inc.
Member	Shimazaki, Ayako	GS1 Japan
Member	Sion, Emilie	GS1 France
Member	Souza, Nadia	GS1 Brasil
Member	Strand, Roman	GS1 Germany
Member	Tan, Milton	GS1 Malaysia
Member	Tompsett, Simon	Waitrose

Function	Name	Company / organisation
Member	Trelle, Ute	1WorldSync Holdings, Inc.
Member	Tse, Steve	GS1 Hong Kong
Member	Tyson, Betty	Knouse Foods Cooperative, Inc
Member	Van den Bergh, Senne	GS1 Belgium & Luxembourg
Member	Van der Eijk, Pim	OASIS - Sonnenglanz Consulting BV
Member	Veldhuis, Saskia	Procter & Gamble Co.
Member	Welch, Shan	GS1 UK
Member	Westerkamp, Jan	GS1 Netherlands
Member	Wilson, Mary	GS1 US
Member	Windsperger, Bekki	Best Buy Co., Inc.
Member	Yang, Shaopeng	GS1 China
Member	Yusdiar, Dani	GS1 Indonesia
Member	Zwanziger, Greg	SUPERVALU

### 9.1.2 Development Team Members

Function	Name	Organisation
GSMP Process Lead	Jean-Luc Champion and Tasha Wiehe	GS1 Global Office
Technical Development Lead	Ewa Iwicka	GS1 Global Office
Peer Review	Mark Van Eeghem	GS1 Global Office